


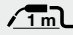





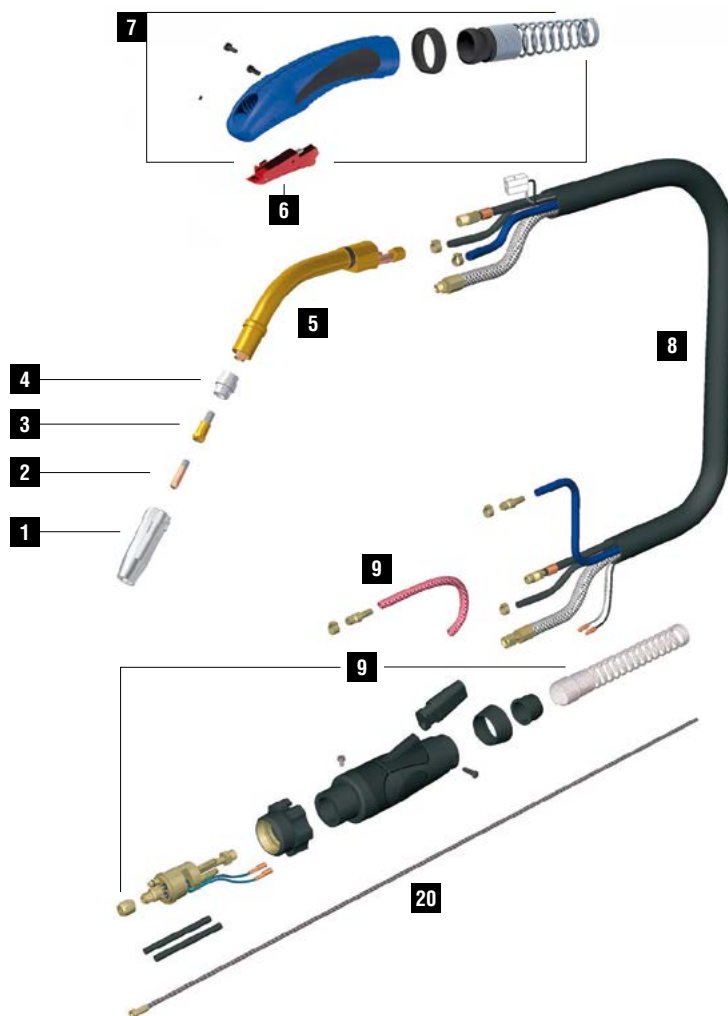
TPLUS 240

CE EN60974-7



CODE	↔		
MB3523	3 m	10'	 EURO
MB3524	4 m	12'	
MB3525	5 m	16.4'	

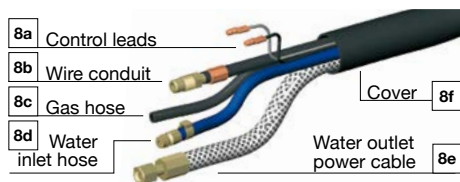
TECHNICAL DATA		
TPLUS 240		
	1,3 kg	2.87 lb
	113	
V PEAK	113	
	0,8 ÷ 1,2 mm	.030" ÷ .045"
X 100%	300A CO2 - 270A Mix	
	2÷4 bar	
	1,6 l/min	



	CODE			Ø		↔	REF		
1	MC0300		nozzle	17 mm	21/32"	63,5 mm	2-1/2"	145.0062	10
1	MC0301		nozzle	12,5 mm	1/2"	63,5 mm	2-1/2"	145.0080	10
1	MC0302		nozzle	10 mm	13/32"	63,5 mm	2-1/2"	145.0128	10
1	MC0303		nozzle	17 mm	21/32"	68 mm	2-11/16"	145.0174	10
2	MD0008-06		M6 - Cu	0,6 mm	.023"	25 mm	31/32"	140.0008	20
2	MD0008-08		M6 - Cu	0,8 mm	.030"	25 mm	31/32"	140.0059	20
2	MD0008-09		M6 - Cu	0,9 mm	.035"	25 mm	31/32"	140.0177	20
2	MD0008-10		M6 - Cu	1,0 mm	.040"	25 mm	31/32"	140.0253	20
2	MD0008-12		M6 - Cu	1,2 mm	.045"	25 mm	31/32"	140.0387	20
3	MD0138-00		M6 - brass			26 mm	1" 1/32	142.0003	10
4	ME0084		plastic			20 mm	25/32"	012.0183	10
4	ME0086		silicon			20 mm	25/32"	-	10
4	ME0484		plastic compound high tech			20 mm	25/32"	-	10
4	ME0584		ceramic			20 mm	25/32"	-	10
20	GM0526		uncoated steel liner	1,0 ÷ 1,2 mm	.040" ÷ .045"	3 m	10'		1
20	GM0527		uncoated steel liner	1,0 ÷ 1,2 mm	.040" ÷ .045"	4 m	12'		1
20	GM0528		uncoated steel liner	1,0 ÷ 1,2 mm	.040" ÷ .045"	5 m	16.4'		1

	CODE			
5	MG0385		Tplus 240 torch head	1
6	BX0742		trigger	1
7	MT0266		handle kit	1
8	MN0012		cable assembly - 3 m / 10'	1
8	MN0013		cable assembly - 4 m / 12'	1

	CODE			
8	MN0014		cable assembly - 5 m / 16.4'	1
9	AR0052		EURO connector	1
9	BW0020		metal EURO nut	10
9	FA0026		liner nut M10x1	10
9	MT0101		Back box kit	1



	CODE	↔
8a	BX0156	3 m / 10'
8b	QB0072	3 m / 10'
8c	QB0080	3 m / 10'
8d	QB0076	3 m / 10'
8e	QA0019	3 m / 10'
8f	MQ0205	3 m / 10'

	CODE	↔
8a	BX0157	4 m / 12'
8b	QB0073	4 m / 12'
8c	QB0081	4 m / 12'
8d	QB0077	4 m / 12'
8e	QA0020	4 m / 12'
8f	MQ0206	4 m / 12'

	CODE	↔
8a	BX0158	5 m / 16.4'
8b	QB0074	5 m / 16.4'
8c	QB0082	5 m / 16.4'
8d	QB0078	5 m / 16.4'
8e	QA0021	5 m / 16.4'
8f	MQ0207	5 m / 16.4'

STANDARD FOR ALL WEAR PARTS SEE PAGE 276