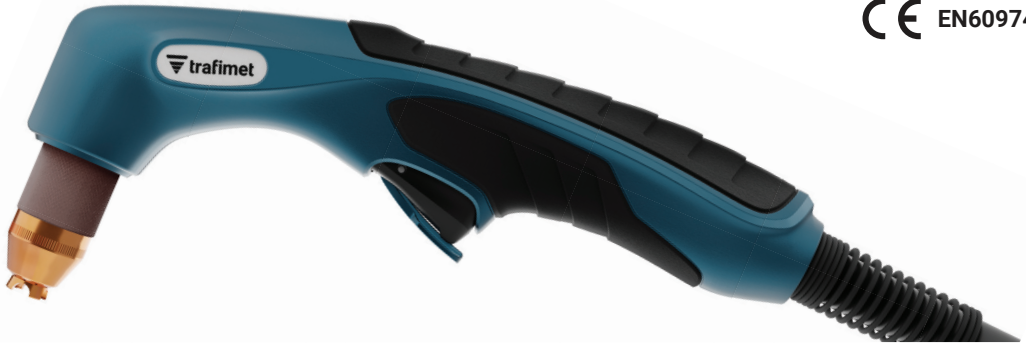


PLUSCUT 105

CE EN60974-7



COAXIAL CABLE			
CODE	↔		
PAP406M-004-SA3	6 m	19.7'	CENTRAL 004
PAP412M-004-SA3	12 m	39.4'	
PAP406M-304-SA3	6 m	19.7'	TRAFIMECTOR 304
PAP412M-304-SA3	12 m	39.4'	

TECHNICAL DATA	
NO HF	105 A
	0,6 kg
	1.32 lb
PEAK	500
	min. 4,5 - max. 5,0 bar
	250 l/min @ 5 bar
	Compressed air
X %	100%
Max. Clean @ 25cm/min.	35mm
Maximum	40mm
Severance	50mm
Pierce	22mm

CABLE ASSEMBLY			
CODE	↔		
PAP406M-004-SC3	6 m	19.7'	CENTRAL 004
PAP412M-004-SC3	12 m	39.4'	
PAP406M-304-SC3	6 m	19.7'	TRAFIMECTOR 304
PAP412M-304-SC3	12 m	39.4'	

For Central 004 and Trafimector 304 pin connection scheme please see the relevant page.

CONSUMABLE KITS

CODE		
PT1105		105 A consumable kit



CONSUMABLES FOR CUTTING (STANDARD)

	CODE		Ø	↔	CONSUMABLE KIT CONTENT		PCS X	X
					PT1105	105 A		
1	CV0383P			25 mm		•	1	2
2	PC0370P			34,8 mm		•	1	2
3	PD0402P15		1,5 mm 0,059"	17,5 mm		•	5	2
4	PE0362P			23 mm		•	1	2
5	PR0362P			29,5 mm		•	5	2

CONSUMABLES FOR CUTTING (EXTENDED)

	CODE		105 A	PCS X	X
1	CV0385P		•	1	2
2	PC0370P		•	1	2
3	PD0406P15		•	5	2
4	PE0362P		•	1	2
5	PR0363P		•	5	2

CONSUMABLES FOR GOUGING

	CODE		105 A	PCS X	X
1	CV0388P		•	1	2
2	PC0370P		•	1	2
3	PD0410P14		•	5	2
4	PE0362P		•	1	2
5	PR0362P		•	5	2

	CODE		Description	
6	FH1716P		air tube	4
7	EA1920		o-ring	5
7	PF1390		torch head	1
8	BX0917		trigger/lever kit with microswitch	1
8	PT0366		microswitch kit	1
9	TP0320		handle with screws	1
10	BW0311		ball joint for cable assembly	1

	CODE		Description	
10	EA2367		spring for coaxial cable	1
11	PH0930-06		coaxial cable - 6 m / 19.7' - 1/4 G	1
11	PH0930-12		coaxial cable - 12m / 39.4' - 1/4 G	1
11	PH4170-06		cable assembly - 6 m / 19.7' - 1/4 G	1
11	PH4170-12		cable assembly - 12 m / 39.4' - 1/4 G	1
12	FY0043		plasma central adaptor - 5 pins	1
12	FY0090		TRAFIMECTOR® central adaptor - torch side	1

STANDARD